



ermes

CONNECT
YOUR PRODUCT
NOW

NDA Series

www.velp.com

How to Connect to VELP Ermes Platform NDA Series Dumas Nitrogen Analyzers

In order to speed up the connection, be sure to get in contact with your IT specialist to get all your laboratory intranet connection details.

Requirements:

1. **Device:** PC, Tablet, Smartphone with your intranet (LAN or Wi-Fi)
2. **Browser:** Chrome, Safari, Firefox, Edge, UC browser

FIRST STEP | ACTIVATE VELP ERMES ACCOUNT

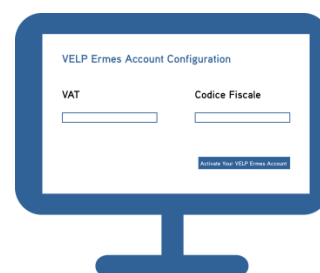
A

Go to www.velp.com through your internet browser.



B

In the Smart Lab menu click on “Configure Your VELP Ermes Account”. Fill in the form and accept Terms and Conditions.



C

You will receive an email containing your ID, Password and a link to proceed to VELP Ermes authentication at the email address that you entered during the registration.



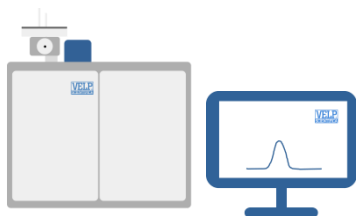
D

At the first login on VELP Ermes platform a new password will be requested: remember to change it!



SECOND STEP | CONNECT YOUR NDA SERIES ANALYZER

A



Turn on the analyzer and open DUMASoft™ software on your PC

B



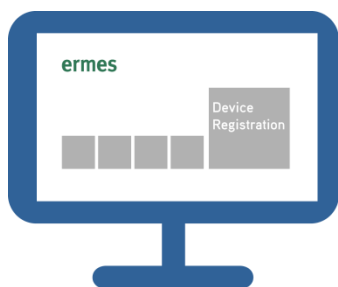
Select Service Menu → Find NDA to connect the analyzer to PC. Then from the same menu select ermes to enable the connection to VELP Ermes platform.

C



Flag the box “Enable DUMASoft™ to transmit on the ERMES platform”. Press OK.

D



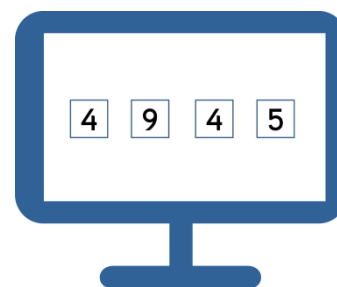
Login on VELP Ermes with your ID and Password received by email, and select “Device Registration”.

E



Enter the analyzer serial number, product code (you can find these information on the silver label on the back of it) and purchase date. Press Next.

F



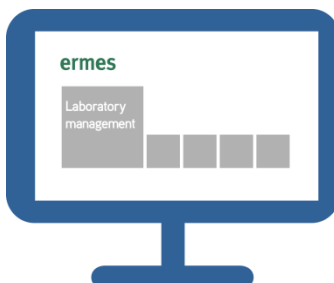
On DUMASoft™ will appear a pop-up with a One Time Code (OTC) of four digits. Enter this number into VELP Ermes platform, Press Next and wait for connection.

G



Give a name to your analyzer and enter the address where your instrument is located. Press Next.

H



Assign your analyzer to a laboratory or create a new one selecting “Laboratory Management”.

I



Now from “Instruments” you can monitor and control your connected analyzer.



Always **Connected** and **Easy to Use**

Monitor and manage multiple instruments 24/7 from your device. Real time visualization of your analysis and of the instrument working conditions. Immediate notifications and alerts.



Safely Manage **Your Data**

VELP Ermes collects and stores your data with the maximum level of encryption following the highest cybersecurity standards. You are now able to have access to your data anytime, anywhere. VELP Ermes will allow you to easily generate and share reports of your analyses.



Your Instrument **Always Updated**

Get software updates (OTA) immediately and benefit of all new features coming from VELP continuous product innovation.



Enhanced **Service Support**

Faster and smarter Service Support thanks to the direct contact with VELP specialists. With VELP Ermes we can guide you to get the maximum from your instrument.